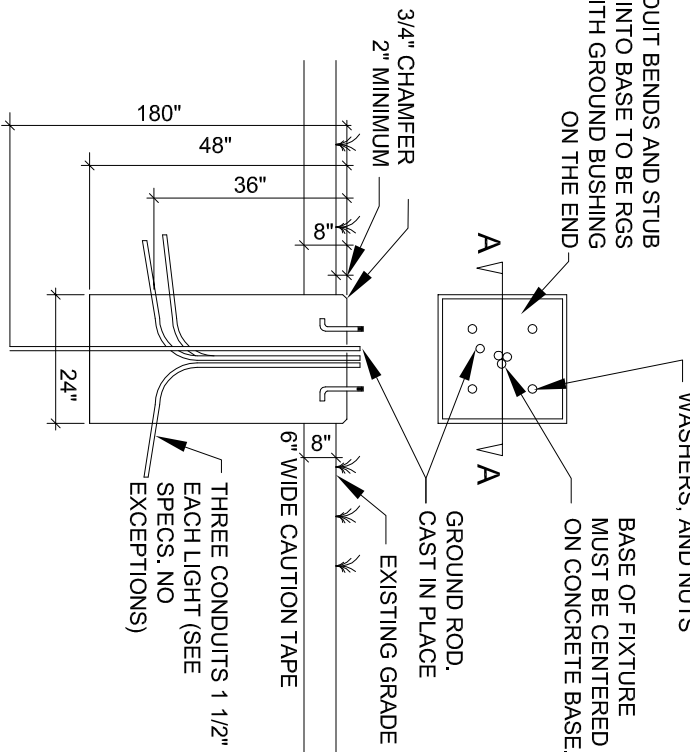


CONDUIT BENDS AND STUB UP INTO BASE TO BE RGS WITH GROUND BUSHING

ANCHOR BOLT LOCATED PER VENDOR DATA. CAST IN PLACE.
GALVANIZED ANCHOR BOLTS LOCK WASHERS, AND NUTS



SECTION A-A
BASE DETAIL

MANUFACTURER: YAORONG
 MODEL: YR-TP300-W/060
 CURRENT VENDOR: GREENLIGHTS, CARY N.C., TEL: 919-766-8900

STANDARD POLE:

1. STANDARDS SHALL BE 14 FEET IN LENGTH U.L. LISTED, COMBINATION TRANSFORMER BASE & TAPERED ALUMINUM POLE, COLOR: BLACK
2. PULL ALL THREE PHASES TO EACH RUN FOR FUTURE USE.
3. WIRE LIGHTS TO EACH PHASE IN SEQUENCE: I.E. A-B-C, A-B-C, ECT.

NO WIRE NUTS SHALL BE USED IN
 FIXTURE BASE USE SPLIT BOLT
 TYPE CONNECTORS

IN LINE FUSES
 (1 EACH REQUIRED)

EXISTING GRADE

SPARE CONDUIT

6" WIDE CAUTION TAPE

CONCRETE BASE, ALL CONCRETE FORMS/GRADES
 MUST BE APPROVED BY OWNER PRIOR
 TO CONCRETE BEING POURED

4#6 THWN
 1 #8 THWN GREEN

GROUND ROD.

TYPICAL ASSEMBLY

SIDEWALK LIGHTING DETAILS

UNIVERSITY OF NORTH CAROLINA WILMINGTON

NOT TO SCALE - 11-9-2018